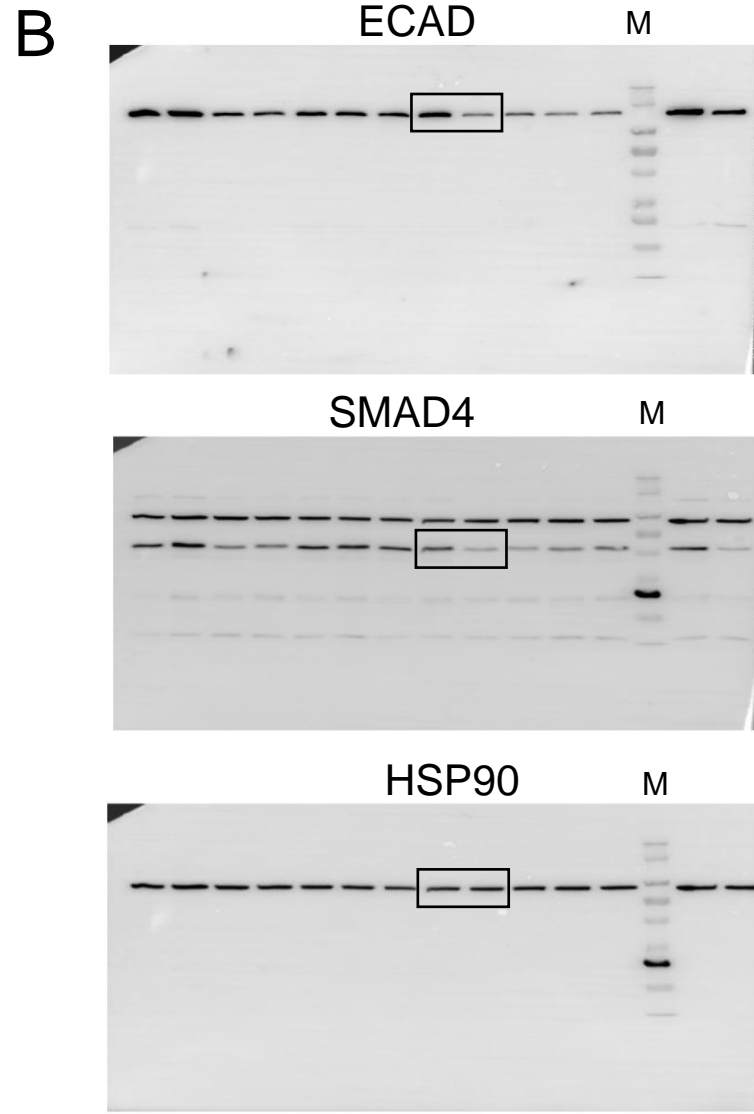


Uncropped blots from Figure 1



C

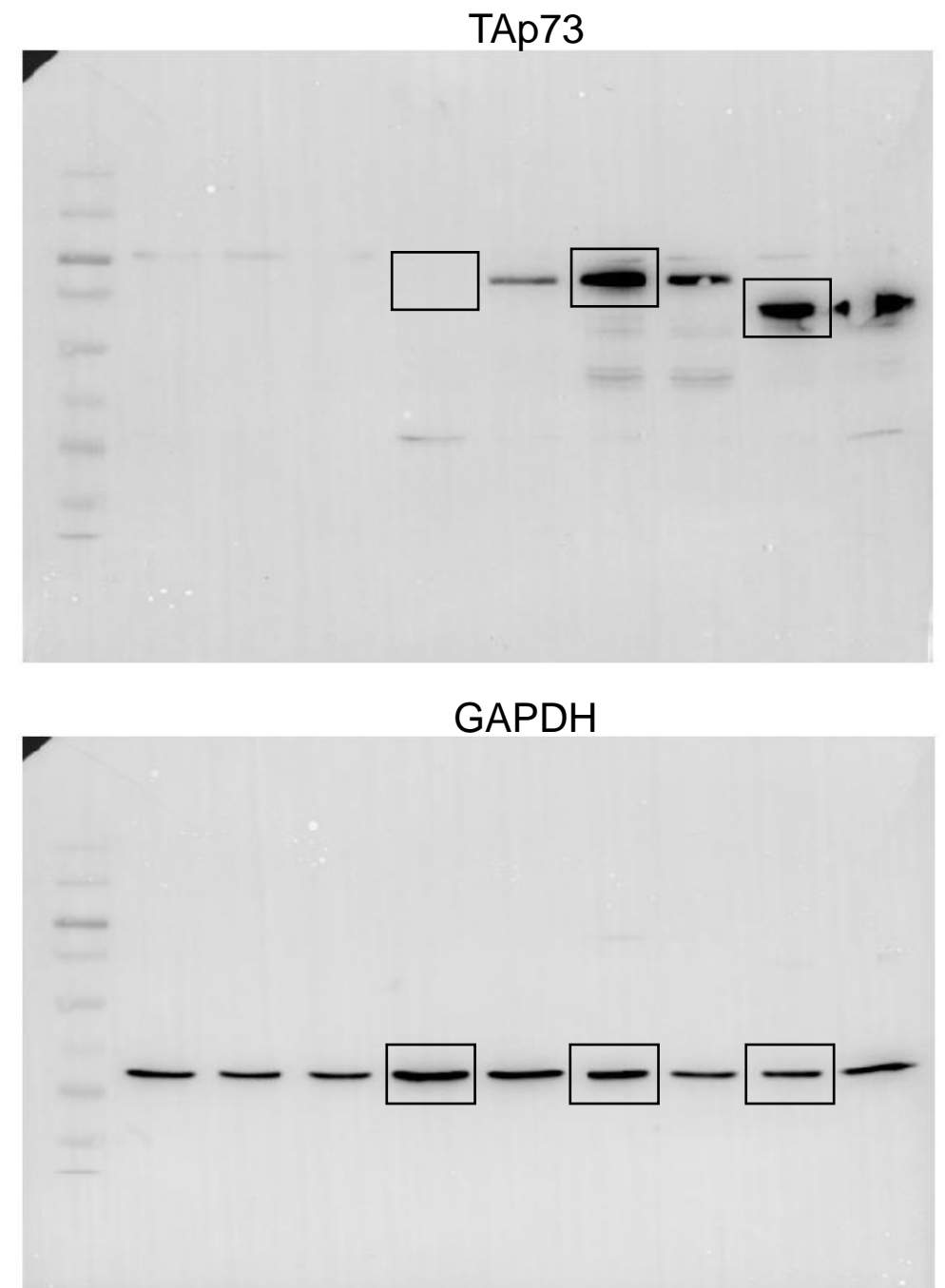
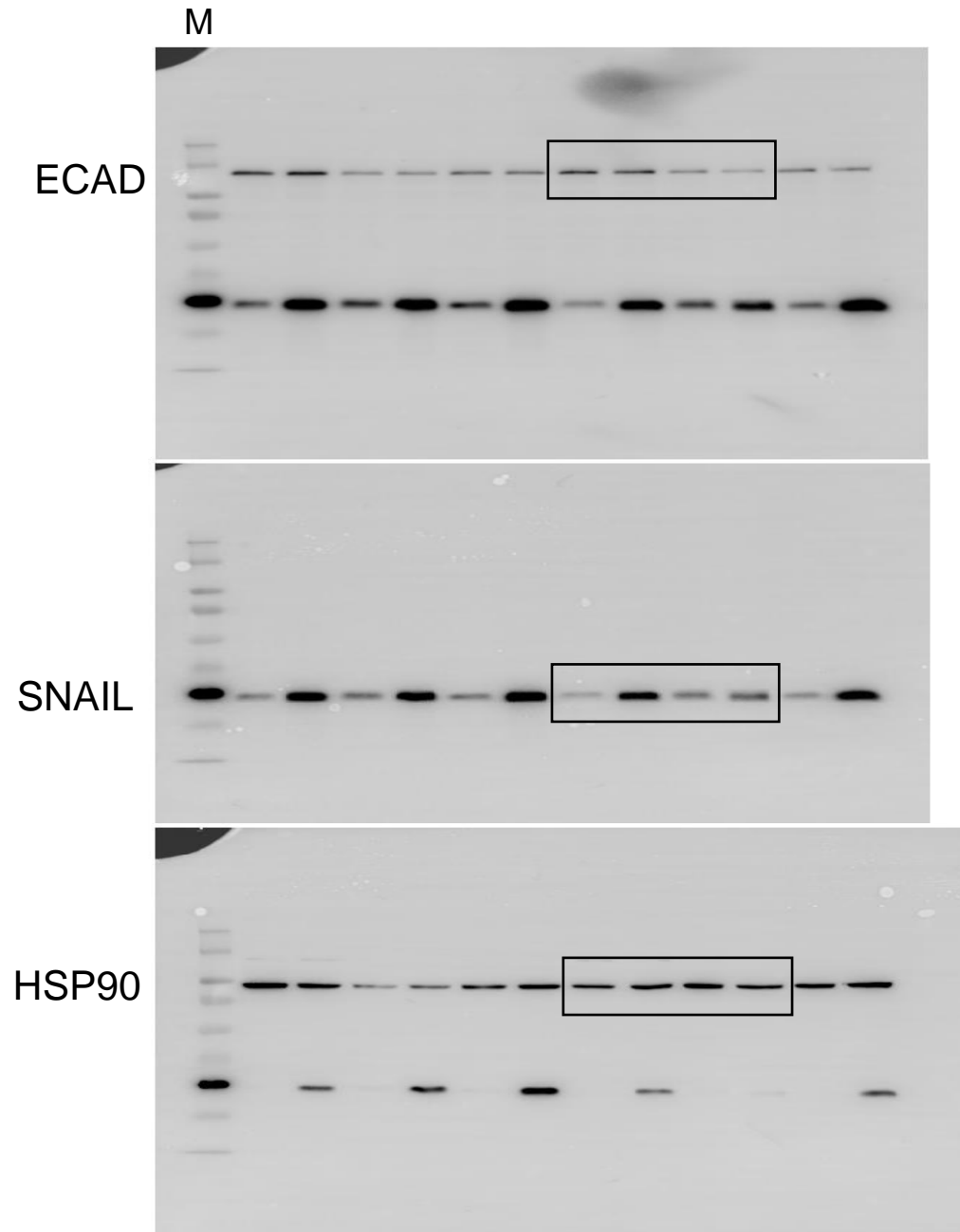


Figure legend: M = molecular weight marker (SM1841, Fermentas/Thermo Fisher Scientific) The boxed bands indicate those in the main figure

Uncropped blots from Figure 2C



The boxed bands indicate those in the main figure

Figure legend: M = molecular weight marker
(SM1841, Fermentas/Thermo Fisher Scientific)

Uncropped blots from Figure 3

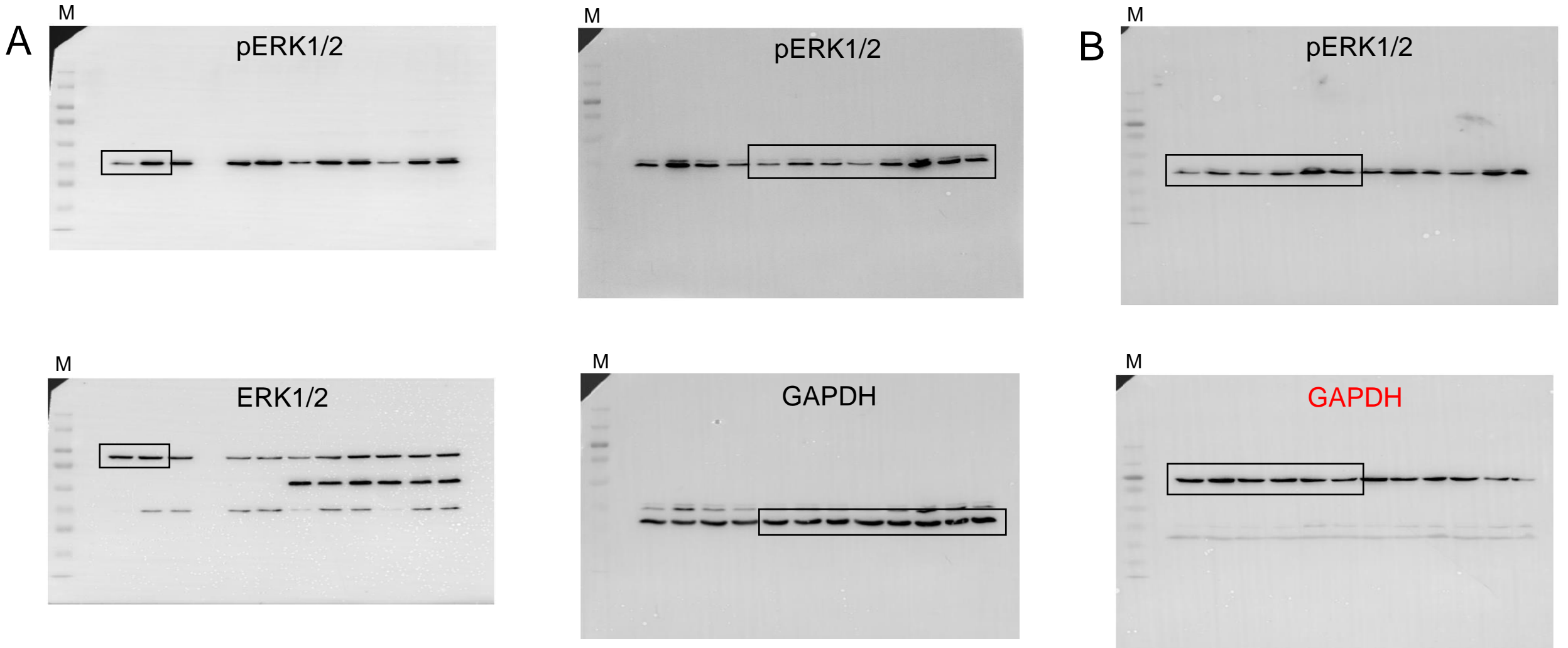


Figure legend: M = molecular weight marker
(SM1841, Fermentas/Thermo Fisher Scientific)

The boxed bands indicate those in the main figure

Uncropped blots from Figure 4

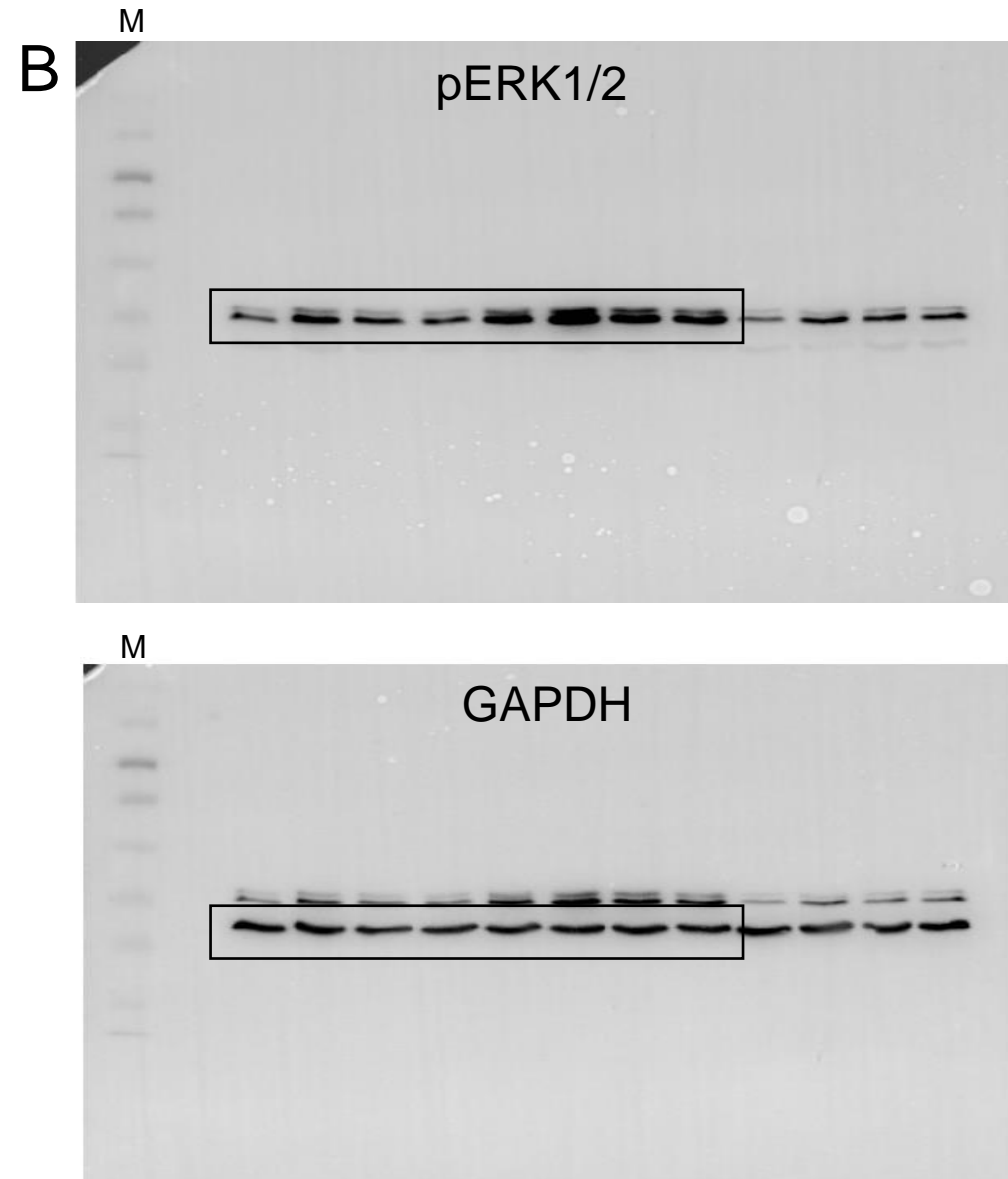
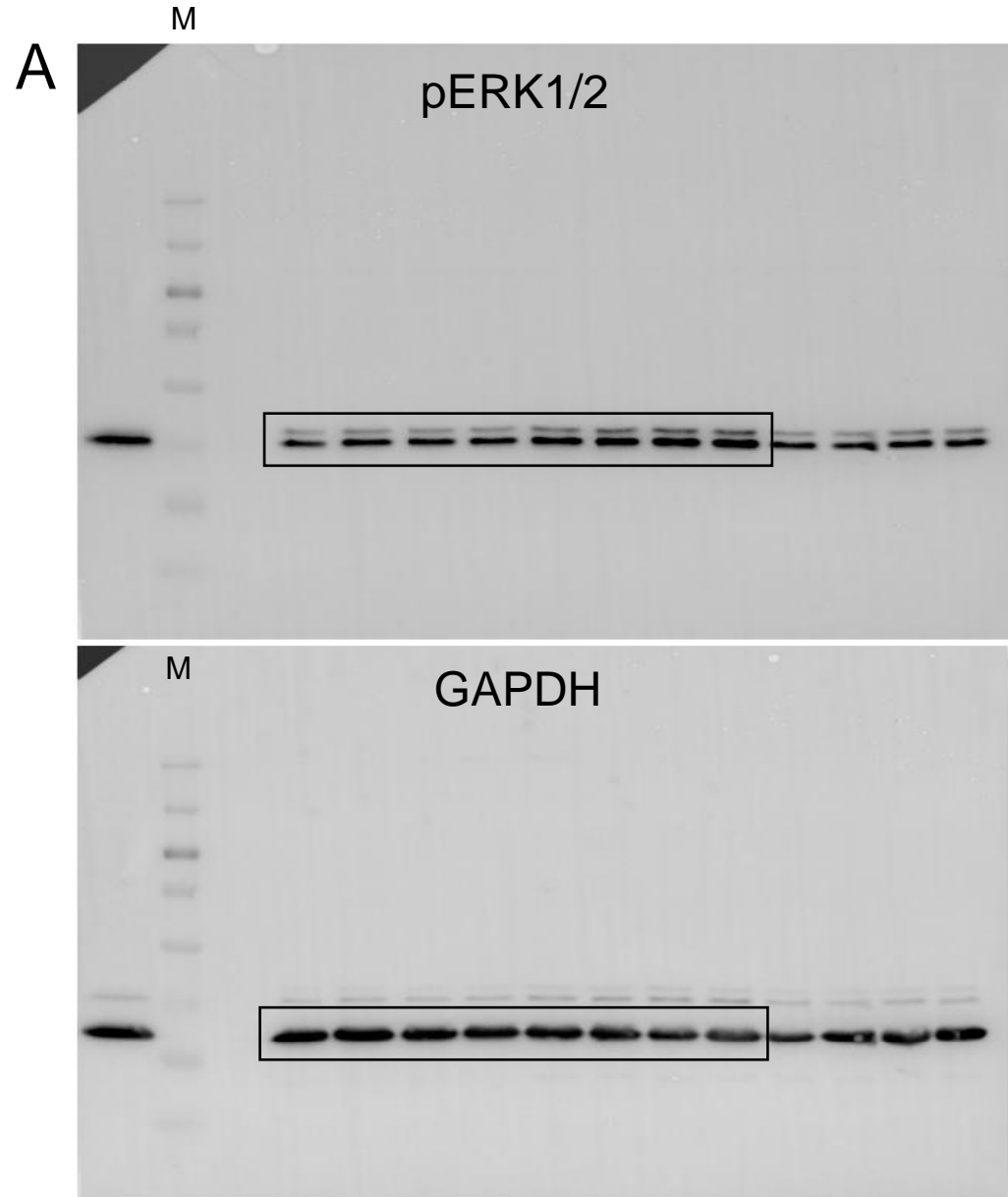


Figure legend: M = molecular weight marker
(SM1841, Fermentas/Thermo Fisher Scientific)

The boxed bands indicate those in the main figure

Uncropped blots from Figure 4

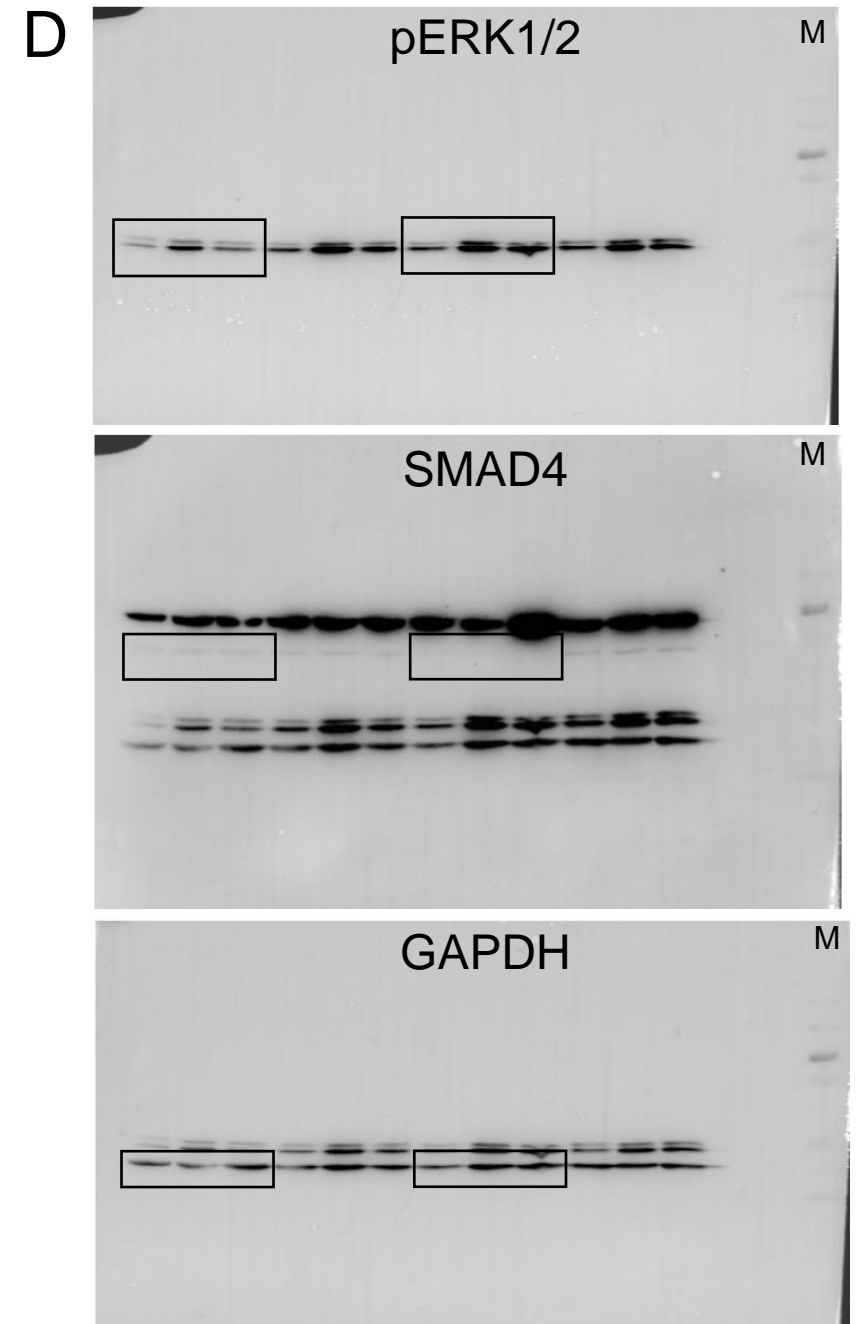
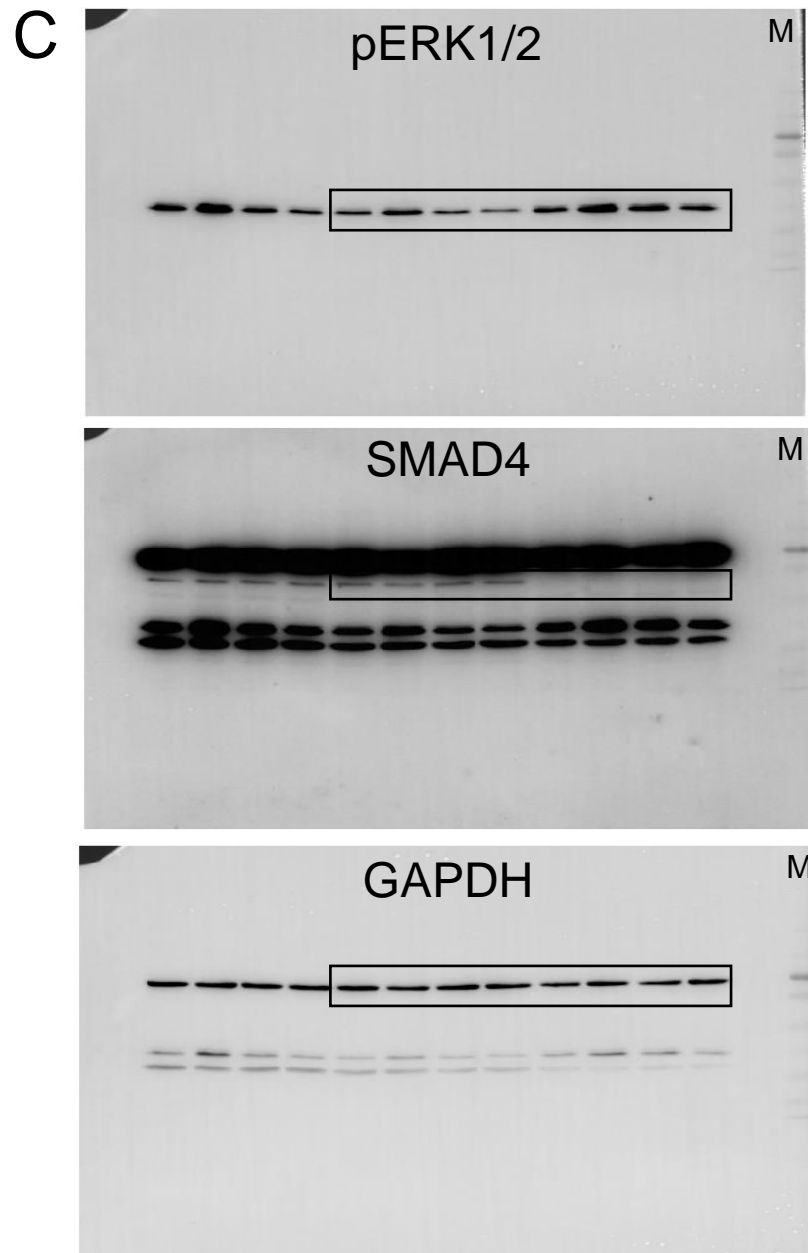


Figure legend: M = molecular weight marker
(SM1841, Fermentas/Thermo Fisher Scientific)

The boxed bands indicate those in the main figure

Uncropped blots from Figure S1A

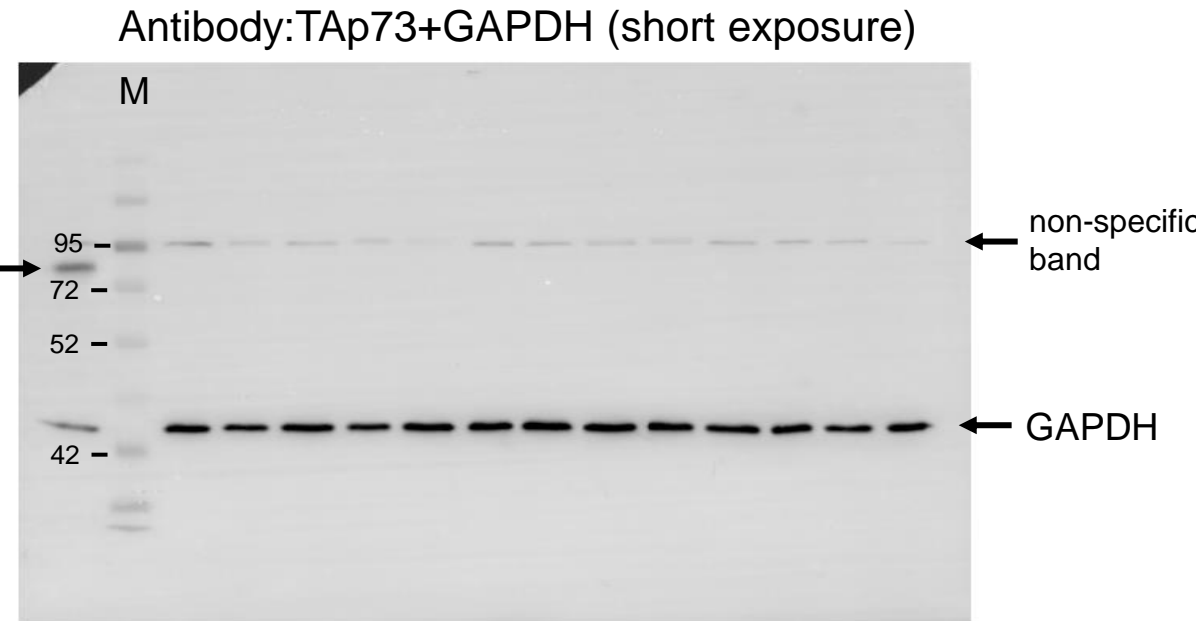
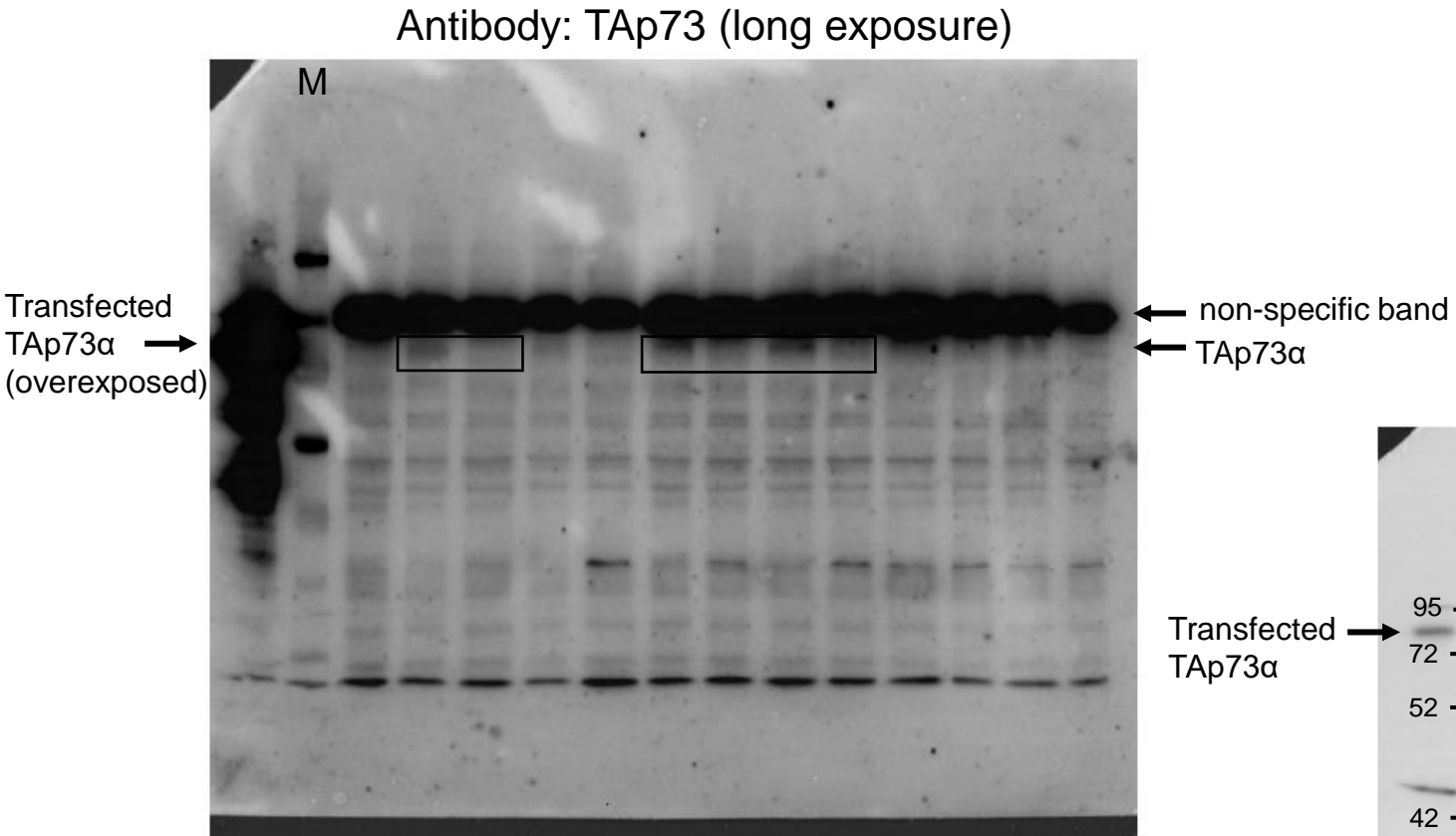


Figure legend: M = molecular weight marker
(SM1841, Fermentas/Thermo Fisher Scientific)

The boxed bands indicate those in the main figure